

LEGEND:

- FLOOR TO BE REMOVED
- THRESHOLD TO BE REMOVED @ CORRIDOR
- EXIST. RADIATOR TO REMAIN. PROTECT DURING DEMOLITION & COORDINATE W/ CORRIDOR FLOOR REMOVAL.
- EXIST. DRINKING FOUNTAIN TO REMAIN - COORDINATE W/ CORRIDOR FLOOR REMOVAL.

DEMOLITION KEY NOTES:

ALL DIMENSIONS AND CONDITIONS TO BE VERIFIED IN FIELD

- 1] RISER PIPES AND/OR CONDUITS ARE TO REMAIN. CONTRACTOR TO COORDINATE IN FIELD (TYP.). SEE GENERAL NOTES # 1.
- 2] REMOVE EXIST. RADIATOR COVER & STORE FOR RE-INSTALLATION. EXIST. RADIATORS TO REMAIN. ADD METAL SHIMS AS REQ'D TO KEEP IN PLACE DURING FLOOR DEMOLITION - TYPICAL FOR ALL CORRIDOR RADIATORS IN AREA OF FLOOR REPLACEMENT. SEE DETAIL 2/DM101.
- 3] REMOVE EXIST. FLOORING IN CORRIDOR DOWN TO SOUND SUBSTRATE. SEE DETAIL 3/A406
- 4] REMOVE EXIST. WOOD BASE TRIM MOLDING CONTINUOUS ON ALL WALLS ADJACENT TO CORRIDOR FLOORING SCHEDULED FOR REMOVAL.
- 5] REMOVE EXIST. THRESHOLD WHERE NOTED. SEE GENERAL NOTE # 2.

PLASTER REPAIR NOTES:

NOTES APPLY TO ALL FLOOR PLANS
SEE PLASTER REPAIR NOTES A100.00.

GENERAL NOTES:

1. V.I.F. ALL EXISTING CORRIDOR METAL PIPE ENCLOSURE PANELS AND CONDITIONS. - PANELS ARE TO BE REMOVED, CLEANED, PAINTED AND REINSTALLED COORDINATE WITH SCHEDULED FLOOR REPLACEMENT
2. CONTRACTOR TO VERIFY EXISTING ALUMINUM EDGE STRIP AND SADDLE LOCATIONS IN FIELD. DEMOLISH ALL SADDLES IN SCOPE AREAS.
3. PROTECT METAL STAIRS DURING FLOOR FINISH REMOVALS.
4. G.C. TO VERIFY ALL DIMENSIONS IN FIELD

President & CEO
Lorraine Grillo

Board of Trustees
Chancellor Carmen Farifa, Chairperson
Curtis A. Harris
Emily A. Youssef

Architecture & Engineering

E. Bruce Barrett, R.A. LEED A.P., Vice President
Elan R. Abner, P.E., Senior Director, Design Consultant Management
Stanley Dahir, R.A., Director, Quality Control & Construction Support
María A. Gómez, P.E., LEED A.P., Director, A&E In-House Design
George D. Roussey, P.E., LEED A.P., Director, Technical Standards
Stacey Spann-Thom, Director, Operations Support

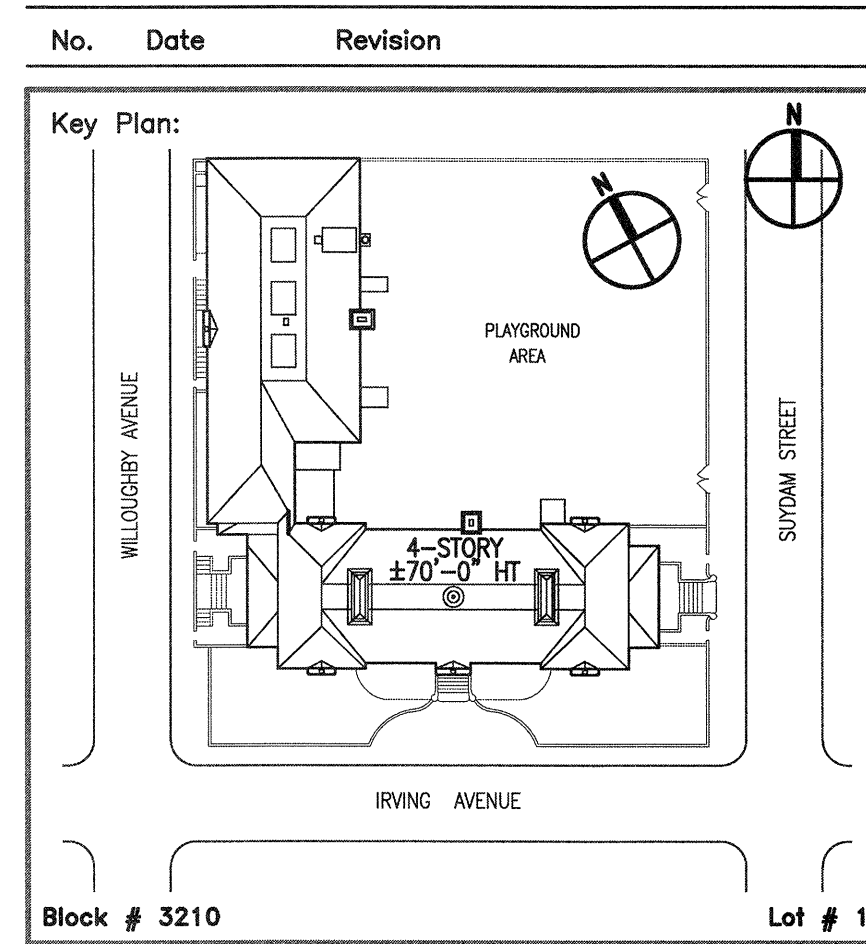
Consultants:

KNOWN AS DVIRKA AND BARTILUCCI CONSULTING ENGINEERS
4 West Red Oak Lane, White Plains, N.Y. 10604
(914) 467-5300 FAX: (914) 467-6103

BID DOCUMENT

NOTE: Drawing may be printed at reduced scale

IT IS A VIOLATION OF THE STATE EDUCATION LAW SECTION 7209 (2) FOR ANY PERSON TO ALTER AN ITEM IN ANY WAY UNLESS SUCH PERSON IS ACTING UNDER THE DIRECTION OF A LICENSED PROFESSIONAL ENGINEER, AND THE ENGINEER STAMPS SUCH CHANGES



| | | |
|-----------------------------|-------------------------|------------|
| SCA Design Manager: | LAWRENCE EINSTEIN, R.A. | |
| Project Architect/Engineer: | MICHAEL RODRIGUEZ, R.A. | |
| Discipline Lead: | ANDRE KEEL, R.A. | |
| Designer: | KELSTON SAUL | |
| Drawn by: | KELSTON SAUL | |
| Checked by: | MARSHA LEED, R.A. | |
| Design No or LLW No.: | Facility Code: | Date: |
| D014584 | K123 | 03/24/2014 |

Project:
P.S. 123 BROOKLYN
ROOF, EXTERIOR MASONRY, FLOOD ELIMINATION,
CORRIDOR FLOORS, PAVED AREAS

Address:
100 IRVING AVENUE
BROOKLYN, NY 11237

Drawing Title:
THIRD FLOOR PLAN - DEMOLITION

| | |
|-------------------------|-----------------|
| Drawing No.: | DM103.00 |
| Sheets in Contract Set: | 9 of 75 |
| Sheets in DOB Set: | 9 of 75 |

1 THIRD FLOOR PLAN - DEMOLITION

SCALE: 3/32" = 1'-0"

Z:\3037 SCA\2012 contract work\p123\roof\contract documents\CAD\DM103.K123.dwg 5/7/2014 11:40:25 AM mvector

Z:\3037 SCA\2012 contract work\p123\roof\contract documents\CAD\DM103-K123.dwg 05/07/14 - 11:40am mvector