

President & CEO  
Lorraine Grillo



Board of Trustees  
Chancellor Carmen Fariña, Chairperson  
Curtis A. Harris  
Emily A. Youssouf

Architecture & Engineering

E. Bruce Barrett, R.A. LEED A.P., Vice President  
Elan R. Abner, P.E., Senior Director, Design Consultant Management  
Stanley Dahir, R.A., Director, Quality Control & Construction Support  
Mario A. Gomez, P.E., LEED A.P., Director, A/E In-House Design  
George D. Roussey, P.E., LEED A.P., Director, Technical Standards  
Stacey Spann-Thorn, Director, Operations Support

Consultants:



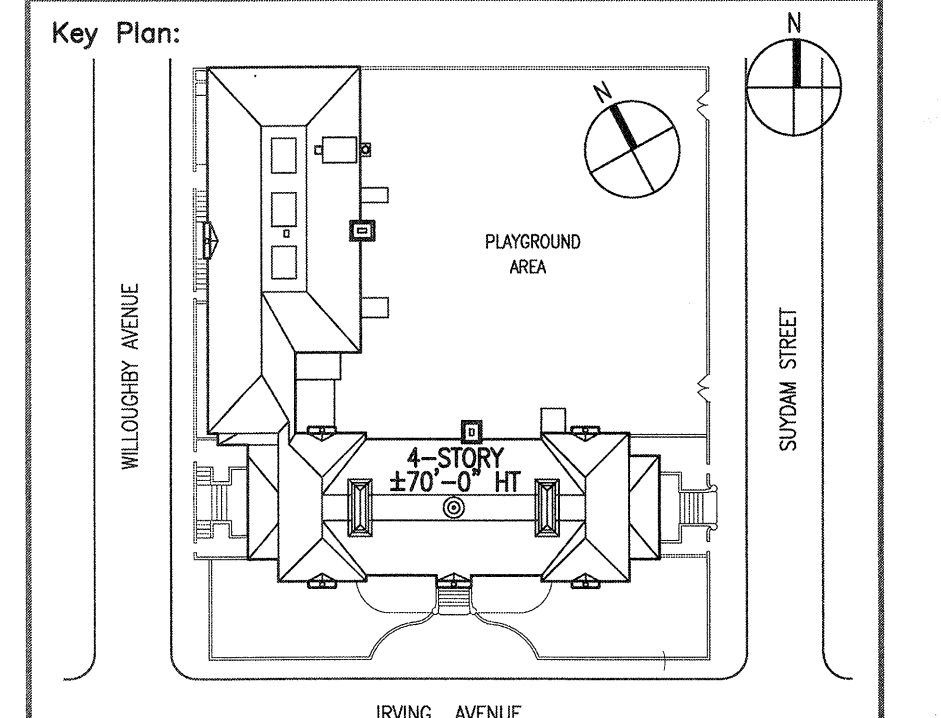
KNOWN AS DVIRKA AND BARTILUCCI CONSULTING ENGINEERS  
4 West Red Oak Lane, White Plains, N.Y. 10604  
(914) 467-5300 FAX: (914) 467-6103

BID DOCUMENT

**NOTE:** Drawing may be printed at reduced scale

IT IS A VIOLATION OF THE STATE EDUCATION LAW SECTION 7209 (2) FOR ANY PERSON TO ALTER AN ITEM IN ANY WAY UNLESS SUCH PERSON IS ACTING UNDER THE DIRECTION OF A LICENSED PROFESSIONAL ENGINEER, AND THE ENGINEER STAMPS SUCH CHANGES

No.	Date	Revision



Block # 3210 Lot # 1

SCA Design Manager:	LAWRENCE EINSTEIN, R.A.	
Project Architect/Engineer:	MICHAEL RODRIGUEZ, R.A.	
Discipline Lead:	ANDRE KEEL, R.A.	
Designer:	ANDRE KEEL, R.A.	
Drawn by:	KELSTON SAUL	
Checked by:	MARSHA LEED, R.A.	
Design No or LLW No.:	Facility Code:	Date:
D014584	K123	03/24/2014

Project:  
**P.S. 123 BROOKLYN**  
ROOF, EXTERIOR MASONRY, FLOOD ELIMINATION,  
CORRIDOR FLOORS, PAVED AREAS

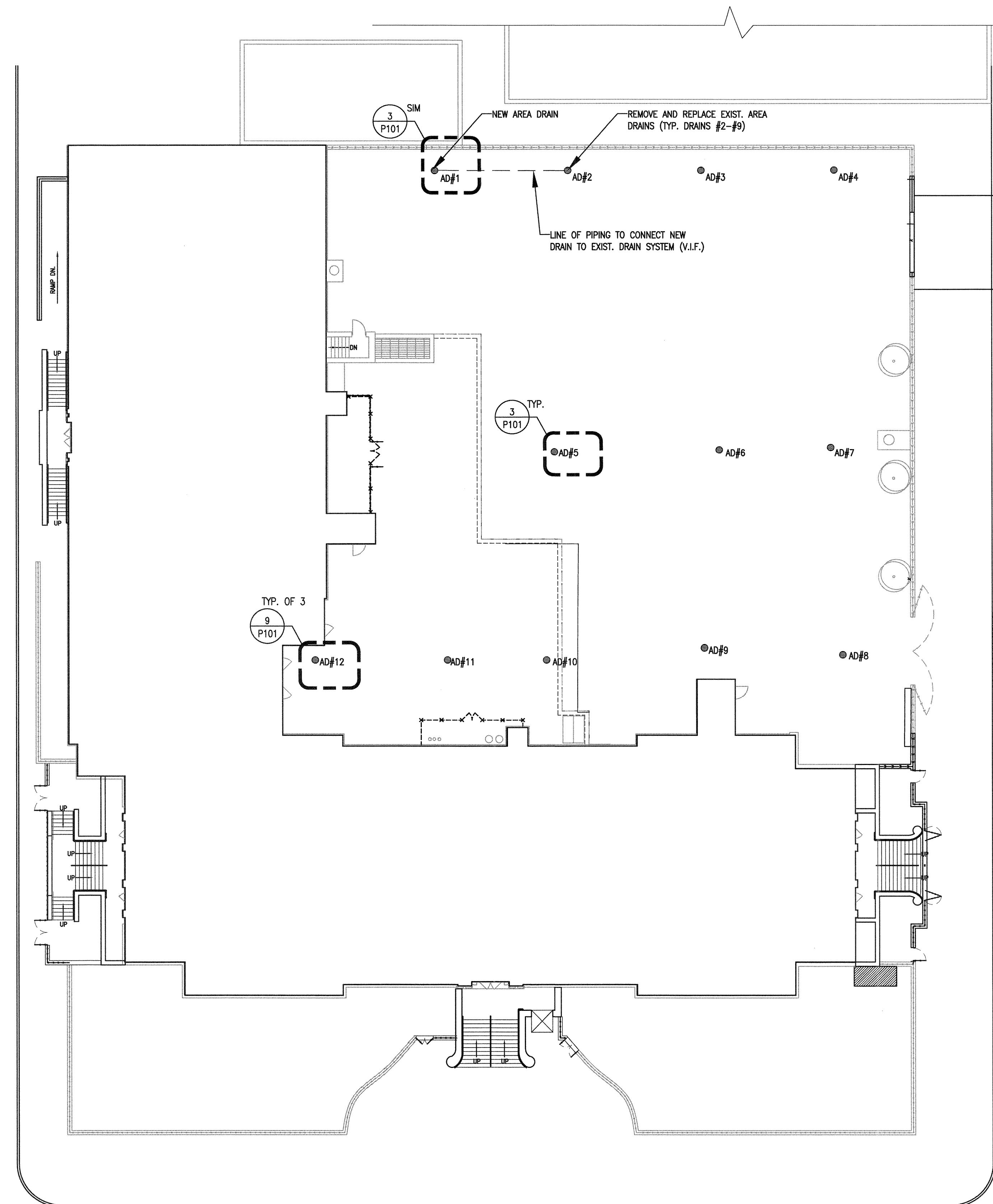
Address:  
100 IRVING AVENUE  
BROOKLYN, NY 11237

Drawing Title:  
**PLUMBING SITE PLAN**

Drawing No.:	<b>P103.00</b>
Sheets in Contract Set:	73 of 75
Sheets in DOB Set:	73 of 75

AREA DRAIN SCHEDULE	
DRAIN #	SCOPE OF WORK
AD#1	SEE GENERAL NOTE #1
AD#2	SEE GENERAL NOTE #2
AD#3	SEE GENERAL NOTE #2
AD#4	SEE GENERAL NOTE #2
AD#5	SEE GENERAL NOTE #2
AD#6	SEE GENERAL NOTE #2
AD#7	SEE GENERAL NOTE #2
AD#8	SEE GENERAL NOTE #2
AD#9	SEE GENERAL NOTE #2
AD#10	SEE GENERAL NOTE #3
AD#11	SEE GENERAL NOTE #3
AD#12	SEE GENERAL NOTE #3

- GENERAL NOTES:**
- INSTALL NEW AREA DRAIN. CONNECT NEW DRAIN #1 TO EXISTING DRAIN #2. SEE DETAIL 3/P101 (SIM.)
  - REMOVE AND REPLACE DRAIN BODY AND ALL ASSOCIATED UNDERGRADE PIPING TO COMPLETE THE INSTALLATION. SEE DETAIL 3/P101.
  - REMOVE AND REPLACE AREA DRAINS OVER BASEMENT - COORDINATE WORK WITH EXISTING CONCRETE STRUCTURAL SLAB TO REMAIN. ALL REPAIRS ARE TO MATCH EXISTING MATERIALS IN KIND. REPLACE PIPING WITHIN 4' OF DRAIN AND CONNECT WITH NO-HUB PIPE CONNECTION. SEE DETAIL 9/P101.



**1** PLUMBING SITE PLAN  
P103 SCALE: 1/16" = 1'-0"

WILLOUGHBY AVENUE

SUYDAM STREET

IRVING AVENUE

Z:\3037 SCA\2012 contract work\56-p123k roof\contract documents\CAD\p103-4123.dwg 05/07/14 11:46:15 AM mveloria

Z:\3037 SCA\2012 contract work\56-p123k roof\contract documents\CAD\p103-4123.dwg 05/07/14 11:46:08 mveloria